

Straight Edges with bevel

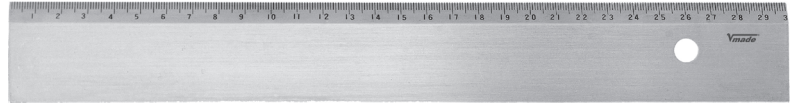
Straight Edge with bevel

- for simple workshop use
- made of steel
- chromed version
- type A = without graduation, type B = with mm graduation
- graduation black etched, bevel edge matt chrome finish

type A **ART N°** 1794200030



type B **ART N°** 1794300030

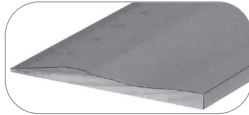
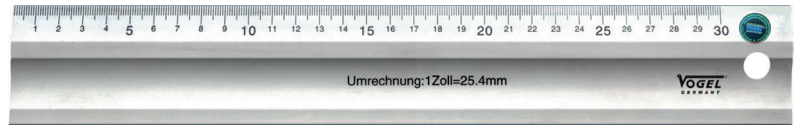


ART N° type A	ART N° type B	mm	mm
1794200030	1794300030	300	40 x 5
17942000400	17943000400	400	40 x 5
1794200050	1794300050	500	40 x 5
1794200080	1794300080	800	40 x 5
1794200100	1794300100	1000	40 x 5
1794200150	1794300150	1500	40 x 5
1794200200	1794300200	2000	40 x 5

Straight Edge with bevel

- for technicians
- made of hard aluminium, anodized quality
- anodised quality
- with black printed mm graduation and cm numbering

ART N° 1795300030

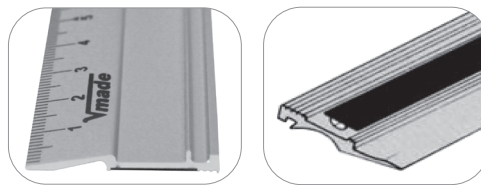
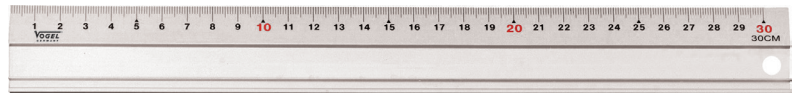


ART N°	mm	mm
1795300030	300	50 x 5
1795300060	600	50 x 5
1795300100	1000	50 x 5
1795300180	1800	50 x 5

Straight Edge with bevel

- e.g. for school, education, DIY and craftsmen
- made of hard aluminium, anodized quality
- made of hard aluminium, anodised quality
- with mm graduation, printed
- backside covered with anti-slip foam rubber

ART N° 1796300030



ART N°	mm	mm
1796300030	300	35 x 1.5
1796300060	600	35 x 1.5
1796300100	1000	35 x 1.5